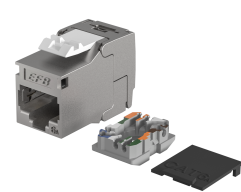
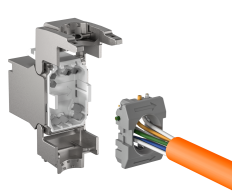
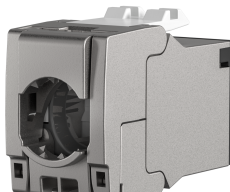
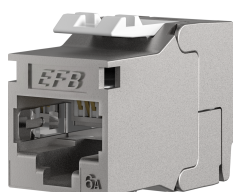
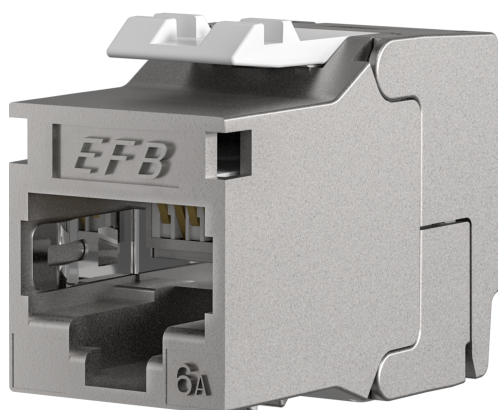


DATASHEET

RJ45 Keystone Slimline/Shortbody Cat.6A Component certified silver



General data

The E-20094 Cat.6A Keystone module combines very high system reserves with a slimline/shortbody housing. The slimline/shortbody housing allows installation in UAE frames and, thanks to the short design, easier installation in underfloor systems and flat data sockets. The high quality standard of the Cat.6A Keystone module ensures very good transmission properties for 10 Gigabit applications, even over a long period of time. Tool-free assembly is very quick and easy; no special tools are required. With the Cat.6A Keystone Module you receive a fully shielded RJ45 module that guarantees long-term and reliable 10 GBit/s Ethernet services in your network installation.

Get helpful installation instructions in our short explanatory video on YouTube - [watch now](#).

Features:

- Extremely slim "Slimline" design enables installation in UAE carrier rings, design compatible
- Very short design of only 29, 2mm for easier installation in ducts and flat boxes
- Flexible installation with installation cables or patch cables possible thanks to compact cable pre-sorters for contacting IDC strips AWG27/7..AWG26/7 and AWG24/1..AWG22/1
- Pair management according to TIA/EIA 568 A/B color codes (color code printed on the cable pre-sorter)
- Suitable for all distribution panels, underfloor systems and support rings with Keystone Breakout
- Slidable shield contact adapts to a wide range of cable diameters (5 - 8,5mm)

This datasheet was created automatically on 12-02-2026 . Technical changes reserved.



DATASHEET

RJ45 Keystone Slimline/Shortbody Cat.6A Component certified silver

Scope of delivery:

- 1 x RJ45 module
- 1 x cable pre-sorter for installation cable AWG24/ 1 - 22/1 (white)
- 1 x cable pre-sorter for patch cables AWG27/7..26/7 (gray)
- 1 x dust cap
- 1 x quick guide

Technical properties

360° shield contact	True
4PPOE certified	True
AWG-range	27 - 22
Cable diameter	8.5 mm
Casing material	Zinc die cast
Category	6A (IEC)
Complaint to UL94	V-0
Connection type	Insulation displacement connector
Contact Resistance	< 20 mΩ
Contact coating	50 μ"
Current capacity	1.5 A
Dielectric Withstanding Voltage	1000 V DC
Dust cover	true
For UAE suitable	True
Insertion force	≤ 30 N
Insulation Resistance	500 MΩ
Mating cycles	≥ 750 Mating cycles
Model	jack
Operating Temperature	-40 - 66 °C
Screened	True
Separate earthing flag	True
Special tool necessary	False
Suitable for degree of protection (IP)	IP20
Suitable for flat cable	False
Suitable for litz wire conductor	True
Suitable for round cable	True
Suitable for solid core	True
Type of connector	RJ45 8(8)

This datasheet was created automatically on 12-02-2026 . Technical changes reserved.



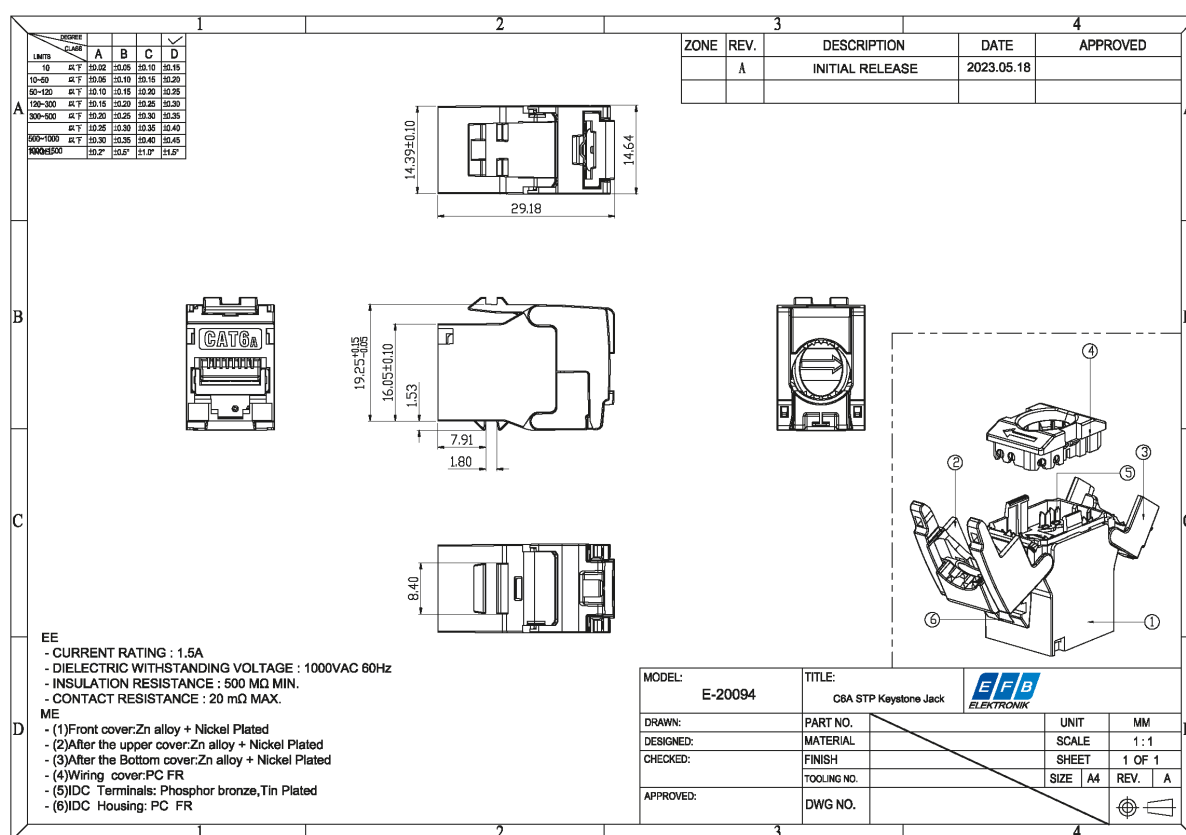
DATASHEET

RJ45 Keystone Slimline/Shortbody Cat.6A Component certified silver

Available variants

ArtNr.	Bezeichnung	Color
E-20094	RJ45 Keystone Slimline/Shortbody Cat.6A Component certified silver	silver

Drawings



This datasheet was created automatically on 12-02-2026 . Technical changes reserved.