



## ***Stretch DVI™***

---

*User's Manual*  
*(For M1-201SA-TR)*

## Manual Contents

---

|   |     |
|---|-----|
| Manual Contents                                 | 1-0 |
| Welcome! Product Description                    | 1-1 |
| System Requirements for Setup                   | 1-2 |
| Installation                                    | 1-3 |
| Troubleshooting, Maintenance, Technical Support | 1-5 |
| Product Specifications                          | 1-6 |
| Warranty Information                            | 1-7 |
| Regulatory Statements                           | 1-8 |

### Pictorials

|  |     |
|--|-----|
| Figure 1 – Optical DVI Extension Module System | 1-1 |
| Figure 2 – Auto EDID button                    | 1-3 |
| Figure 3 – Connection of optical fiber         | 1-4 |

## Welcome!

Congratulations on your purchase of the **Stretch DVI™** M1-201SA-TR Optical DVI (Digital Visual Interface) Extension Module. This manual contains information that will assist you in installing and operating the product.

### Product Description

The M1-201SA-TR optical DVI module transmits four (4) optical data, Red, Green, Blue and clock and can be extended up to 500 meters (1,640ft) over a pair of LC duplex multi-mode fibers or four (4) LC simplex multi-mode fibers at WUXGA (1920x1200) at 60Hz vertical refresh.

The EDID (Extended Display Identification Data) in a display can be read and restored by just plugging once transmitter to the display. This **Auto EDID programming** feature makes the installation of M1-201SA more easy and flexible at any variable resolution display systems.

For your convenience, UXGA EDID would have been done before shipment as a default.

### Shipping Group

- ❑ **M1-201SA-TR Optical DVI Extension Module:** One (1) pair
- ❑ **DC power adapter:** Two (2) units
- ❑ **User's Manual**

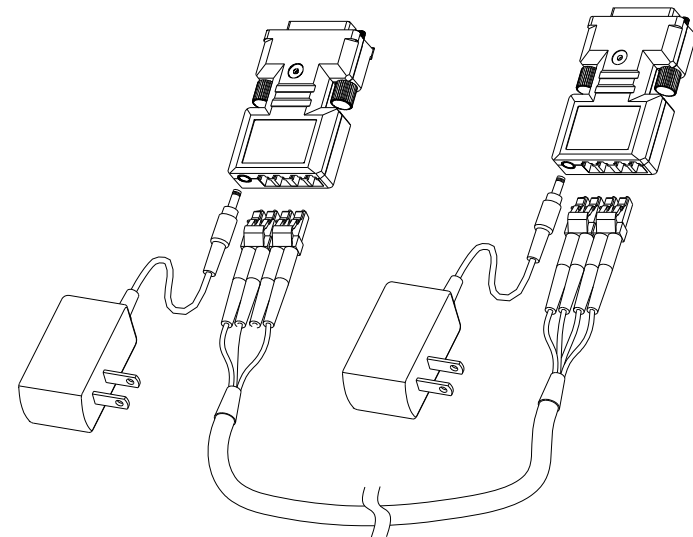


Figure 1 – Optical DVI Extension Modules System

## System Requirements for Setup

### □ Hardware requirements

- You have to have a DVI graphic controller or card having a DVI port in your PC, SUN or Mac systems. It should support the maximum graphic resolution feature of displays to be connected.
- No special requirements for memory size, CPU speed and chipsets, if you've already properly installed your DVI graphic controllers or cards.

### □ Software requirements

- No special restrictions, if you've already properly installed your DVI graphic controller in your OS.

### □ AC/DC Power Adapter Technical Advisory

The transmitter (Tx) module of M1-201SA-TR is designed a power protection circuit from conflict of power supply between the external DC power adapter and your graphic card through the DVI pin.

However, the receiver (Rx) module should be supplied by an AC/DC power adapter.

**Tips:** In general, most of laptops or desktop PCs with PCI Express graphic card require using an AC/DC power adapter for the transmitter module.

**Note:** Recommend to use power supplying adapters offered by Opticis, which has short-circuit break features.

## Installation

**Important:** Please use the installation procedure below. Improper or no operation may result if the start-up sequence is not correctly followed.

### Step 1

Plug the 5V power adapter to the power jack of the transmitter, and connect the adapter to the mains electricity. Ensures the blue LED ON.

### Step 2

For Auto EDID programming;

- a) **Push the Auto EDID button with a narrow pin.** After twice blinking of Blue LED, it will be turned off.
- b) **Connect the powered transmitter to display while turned on, not to the PC.** The LED blinking indicates reading the EDID. LED OFF after blinking notices programming done.
- c) Disconnect the transmitter from the display. Then LED ON again.

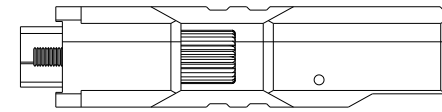


Figure 2 – Auto EDID button

**Note:** If you want to change the display, please do again the step 2. The default EDID in factory ship-out is programmed in the VESA standard of UXGA 60Hz.

### Step 3

Plug directly the transmitter module to DVI receptacle of PC and confirm if the blue LED ON. Or, connect 5V power adapter to the power jack of the transmitter.

**Note:** Be recommend NOT to use any intermediate cable or adapter between them to avoid undesirable performance degradation.

**Note:** If you use laptop or Desktop PC with PCI Express graphic card, we recommend using 5V power adapter for the transmitter.

**Note:** Please DO NOT look directly into the LC receptacles of the Transmitter, while it is powered on, although this product is regulated strictly enough to operate under the LASER Class I, classified by CDRH/FDA for eye safety.

#### Step 4

Connect another 5V power adapter to the receiver. Then blue LED ON.

#### Step 5

Plug the receiver to the DVI receptacle of display.

**Note:** Be recommended NOT to use any intermediate cable or adapter between them to avoid undesirable performance degradation.

#### Step 6

Connect each LC multi-mode fiber one by one as shown in figure 3.

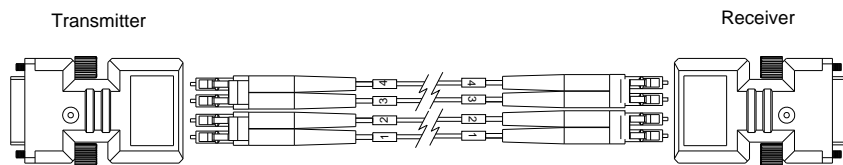


Figure 3 – Connection of optical fiber

#### Step 7

Makes the PC Power On.

#### Step 8

Go to Display Properties in Windows systems and click the tap of Settings. Then you can set the right display resolution to meet your display. Once you set the right resolution, you could see displaying the initial screen at the same resolution as just before you powered on.

**Note:** If you cannot see the initial screen of the OS system and have skipped the **Step 1** and **Step 2**, you have to follow the **Step 1** and **Step 2** instructions.

#### Step 9

You can see processing to adjust the system screen.

## 1-4 Installation (continued)

## Troubleshooting

### **The display displays only black screen.**

- Ensure that all plugs and jacks used by external power supplies (both Opticis and others) are firmly connected. Ensure the blue LED ON.
- Ensure that the DVI ports are firmly plugged in to the PC and display.
- Ensure that the transmitter and receiver modules plugged correctly to the PC and display, respectively.
- Check if the PC and display are powered on and properly booted.
- Reset the system by de-plugging and re-plugging the transmitter DVI port or receiver DVI port, or by de-plugging and re-plugging the power cord plugs of transmitter and receiver modules.
- Re-boot up the system while connecting the optical DVI extension module.

### **Screen is distorted or displays noises.**

- Check if the graphic resolution is properly set. Go to the display properties of Windows and tap the settings.
- Ensure that the resolution sets less than WUXGA (1920x1200) at 60Hz refresh ratio.
- Reset the system. Disconnect and reconnect the optical DVI cables or 5V power adapters.

## Maintenance

No special maintenance is required for the optical DVI module and power adapters. Ensure that the DVI modules and power adapters are stored or used in a benign environment free from liquid or dirt contamination.

There are no user serviceable parts. Refer all service and repair issues to Opticis.

## Technical Support and Service

For commercial or general product support, contact your reseller. For technical service, contact Opticis by email [techsupp@opticis.com](mailto:techsupp@opticis.com) or visit its website at [www.opticis.com](http://www.opticis.com)

## 1-5 Troubleshooting, Maintenance, Technical Support

## Product Specifications

### M1-201SA-TR Optical DVI Extension Modules

- **Compliance with DVI standard:** Supports DVI1.0, fully implemented by fiber-optic communication and DDC2B by virtual DDC.
- **Extension limit:** 500m (1,640feet) for WUXGA (1920x1200) at 60 Hz refresh rate.
- **Graphic transmission bandwidth:** Supports up to WUXGA at 60Hz, or 1.65Gbps bandwidth per graphic channel.
- **Fiber-optic connection:** The transmitter and receiver modules of M1-201SA-TR have two (2) duplex LC receptacles so as to be connected with two (2) LC duplex multi-mode fiber, having 62.5/125µm or 50/125µm core.
- **DDC connection:** Virtual DDC by Auto EDID programming.
- **Mechanical specifications of transmitter and receiver modules**
  - **Dimensions:** 39mm / 15mm / 59mm (W/H/D)
- **Environmental Specifications**
  - Operating temperature: 0°C to 50°C
  - Storage temperature: - 40°C to 85°C
  - Humidity: 5% to 95%

### AC/DC Power Adapter

- **Power Input:** AC 100-240V, 50/60Hz 1.2A
- **Power Output:** +5 V, 2A SMPS DC-power Adapter
- **Cord DC Jack:** Core is 5 V and outer is GND.
- **Manufacturer:** Ault Korea Corporation.

## 1-6 Product Specifications

## Warranty Information

### 1 (One) Year Warranty

Opticis warrants this optical DVI extension module to be free from defects in workmanship and materials, under normal use and service, for a period of one (1) year from the date of purchase from Opticis or its authorized resellers.

If a product does not work as warranted during the applicable warranty period, Opticis shall, at its option and expense, repair the defective product or part, deliver to customer an equivalent product or part to replace the defective item, or refund to customer the purchase price paid for the defective product.

All products that are replaced will become the property of Opticis.

Replacement products may be new or reconditioned.

Any replaced or repaired product or part has a ninety (90) day warranty or the remainder of the initial warranty period, whichever is longer.

Opticis shall not be responsible for any software, firmware, information, or memory data of customer contained in, stored on, or integrated with any products returned to Opticis for repair under warranty or not.

### Warranty Limitation and Exclusion

Opticis shall have no further obligation under the foregoing limited warranty if the product has been damaged due to abuse, misuse, neglect, accident, unusual physical or electrical stress, unauthorized modifications, tampering, alterations, or service other than by Opticis or its authorized agents, causes other than from ordinary use or failure to properly use the product in the application for which said product is intended.

### Dispose of Old Electrical & Electronic Equipment

(Applicable in the European Union and other European countries with separate systems)



This symbol on the product or on its packaging indicates that this product shall not be treated as household waste. Instead it shall be handed over to the applicable collection point for the recycling of electrical and electronic equipment. By ensuring this product is disposed of correctly, you will help prevent potential negative consequences for the environment and human health, which could otherwise be caused by inappropriate waste handling of this product.

The recycling of materials will help to conserve natural resources. For more detailed information about recycling of this product, please contact your local city office, your household waste disposal service or the shop where you purchased the product.

## 1-7 Warranty Information

## UL/IEC Statement

**This equipment has been tested and found to comply with the limits for medical devices in IEC 60601-1:1994.** These limits are designed to provide reasonable protection against harmful interference in a typical medical installation.

This equipment generates uses and can radiate radio frequency energy and, if not installed and used in accordance with the instructions, may cause harmful interference to other devices in the vicinity. However, there is no guarantee that interference will not occur in a particular installation. If this equipment does cause harmful interference to other devices, which can be determined by turning the equipment off and on, the user is encouraged to try to correct the interference by one or more of the following measures:

- Reorient or relocate the receiving device.
- Increase the separation between the equipment.
- Connect the equipment into an outlet on a circuit different from that to which the other device(s) are connected.
- Consult the manufacturer or field service technician for help.
  
- Type of protection against electric shock: Class I equipment
- Degree of protection against electric shock: Not classified - no applied parts
- Classification according to the degree of protection against ingress of water as detailed in the current edition of IEC 529: IPX0, ordinary equipment
- This equipment is not suitable for use in the presence of flammable anesthetics or oxygen
- Mode of operation: continuous operation

## Certification of Eye Safety

This laser product is inside implemented by using 1300/1550nm optical module, manufactured by Opticis Co., Ltd., which are all certified by IEC/EN60825-1 referred in Accession Number 07-1334-0217 as classified in Laser Class1.



## 1-8 Regulatory Statements

© 2009 Opticis Co., Ltd. All Rights Reserved  
Revision 2.2, .Nov. 26, 2009

## Opticis Locations

### Headquarters

Opticis Co., Ltd.

#304, Byucksan Technopia, 434-6  
Sangdaewon-Dong, Chungwon-Ku,  
Sungnam City, Kyungki-Do, 462-716  
South Korea

Tel: +82 (31) 737-8033~8

Fax: +82 (31) 737-8079

[www.opticis.com](http://www.opticis.com)

### North American Office

Opticis USA LLC

649 Route 206  
Unit 9 Suite 307  
Hillsborough, NJ 08844

Tel: 908-837-9652

Fax: 908-837-9078

[cdkim@opticis.com](mailto:cdkim@opticis.com)

For order support, please contact your Distributor or Reseller.

For technical support, check with the Opticis web site [www.opticis.com](http://www.opticis.com) or contact [techsupp@opticis.com](mailto:techsupp@opticis.com)